

# NEW PRODUCT

## 5 FLUTES END MILL OPHR SERIES

### END MILL 1/4"

OPHR-1612R015  
LOC 3/4" RADIUS .015"

OPHR-1612C045  
LOC 3/4" - CHAMFER 45X.010"

### END MILL 3/8"

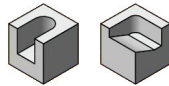
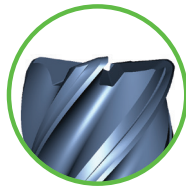
OPHR-2416R015  
LOC 1" RADIUS .015"

OPHR-2416C045  
LOC 1" - CHAMFER 45X.010"

### END MILL 1/2"

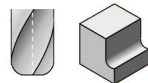
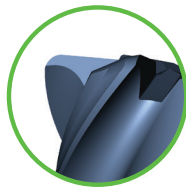
OPHR-3220R030  
LOC 1 1/4" RADIUS .030"

OPHR-3220C045  
LOC 1 1/4" - CHAMFER 45X.015"



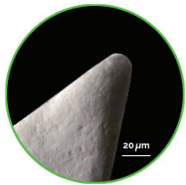
#### REINFORCED CORNER "DISH/DUB"

- ▶ Leave a superior surface finish
- ▶ Plunging and ramping up to 12 degrees



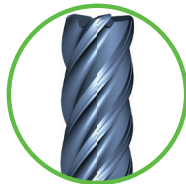
#### REINFORCED RADIUS

- ▶ Reduces corner wear
- ▶ Extends tool life
- ▶ **45° DEGREE CHAMFER**
- ▶ Chip breaking edge



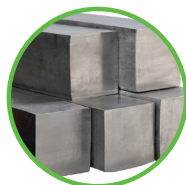
#### NEW HIGH PERFORMANCE TOOL COATING

- ▶ Edge preparation process
- ▶ Improved tool life
- ▶ Eliminates chatter markings



#### AGGRESSIVE DESIGN WITH VARIABLE HELIX

- ▶ Increased chip evacuation
- ▶ Less deflection
- ▶ Improved stability



#### TARGETED MATERIALS

- ▶ Stainless steel
- ▶ Titanium
- ▶ High performance alloys
- ▶ Tool steels
- ▶ Cast iron steels



**ACCESS PRODUCT  
DETAILS**